

## Medicart - Accessories

With a myriad of accessories to choose from, the Medicart can be equipped to fit the needs of every department.

Please note that not all accessories fit every position on the Medicart and that the number of accessories which can be mounted on a Medicart is limited.

For a summary table please refer to page 1.69 and 1.70.



### » Push handle

Type	Article Number
●	<u>19010 00005</u>
◐	19022 00005



### » Grey metal bin

Type	Article Number	Description	Capacity	Ext. Dimensions
●	<u>19010 00006</u>	Standard	18 l	12 x 7 x 14 inch
◐	<u>19022 00002</u>	Standard	18 l	12 x 7 x 14 inch
●	19010 00044	With lid	18 l	12 x 7 x 14 inch



### » Fold-down worktop

Type	Article Number	Maximum load	Ext. Dimensions
●	<u>19010 00008</u>	33 lbs	20 x 16 x 0 <sup>5/8</sup> inch
◐	<u>19022 00009</u>	33 lbs	16 <sup>1/2</sup> x 12 x 0 <sup>5/8</sup> inch



### » Storage compartment

Type	Article Number	Description	Int. Dimension	Ext. Dimensions
●	<u>19010 00014</u>	Storage compartment for Medicart	6 <sup>1/2</sup> inch	20 x 6 <sup>1/2</sup> x 3 <sup>1/2</sup> inch
●	19010 00002	Storage compartment for Medicart	5 <sup>1/4</sup> inch	20 x 5 <sup>1/2</sup> x 3 <sup>1/4</sup> inch
●	19010 00001	For Stala structure	5 <sup>1/4</sup> inch	24 x 5 <sup>1/4</sup> x 3 <sup>1/4</sup> inch
◐	19022 00003	Storage compartment for Medicart	5 <sup>1/4</sup> inch	16 <sup>1/2</sup> x 5 <sup>1/2</sup> x 3 <sup>1/4</sup> inch
● ◐	19010 00074	Storage compartment for Medicart (short model)	5 <sup>1/4</sup> inch	6 <sup>1/2</sup> x 5 <sup>1/2</sup> x 3 <sup>1/4</sup> inch

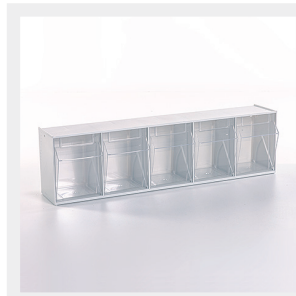
● For Medicart Drawers & Medicart Roller Shutter    ◐ For Medicart Drawers Small    Standard article (non-standard articles have a longer delivery time)

## » Medicart – Accessories



### » Stala base structure for different tray types

Type	Article Number	Description	Ext. Dimensions
●	<a href="#">19010 00010</a>	For Medicart Drawers      Structure without trays	25 1/2 x 0 3/4 x 25 1/2 inch
●	<a href="#">19010 00022</a>	For Medicart Roller Shutter      Structure without trays	27 x 0 3/4 x 25 1/2 inch



### » Trays for Stala structure

Type	Article Number	Description
●	<a href="#">1166333</a>	3 trays
●	<a href="#">1166334</a>	4 trays
●	<a href="#">1166335</a>	5 trays
●	<a href="#">1166336</a>	6 trays
●	<a href="#">1166339</a>	9 trays



### » DIN-rail (including spacers)

Type	Article Number	Description	Ext. Dimensions
●	<a href="#">19010 00078</a>	For the side of Medicart	20 x 1 x 0 1/2 inch
◐	<a href="#">19022 00012</a>	For the side of Medicart	16 1/2 x 1 x 0 1/2 inch
●	<a href="#">19010 00029</a>	For Stala structure	24 1/2 x 1 x 0 1/2 inch



### » Waste bin for DIN-rail

Type	Article Number	Capacity	Description	Ext. Dimensions
● ◐	<a href="#">19010 00060</a>	8 l	2 next to each other possible	10 x 8 x 13 1/2 inch



### » Containerholder for needles

Type	Article Number	Ext. Dimensions
● ◐	<a href="#">19010 00007</a>	4 3/4 x 4 3/4 x 8 inch

● For Medicart Drawers & Medicart Roller Shutter

◐ For Medicart Drawers Small

Standard article (non-standard articles have a longer delivery time)

## » Medicart – Accessories



### » Connecting unit for PC baskets of 12 x 16 inch

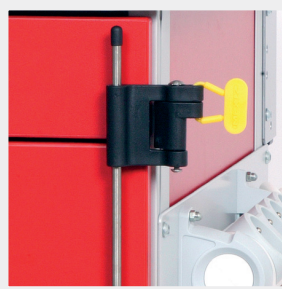
Type	Article Number	Ext. Dimensions
●	<u>19010 00003</u>	12 x 16 inch
◐	19022 00001	16 x 12 inch



### » Flex arm for portable (maximum weight 17.5 lbs)\*

Type	Article Number	Description	Height border	Ext. Dimensions
● ◐	<u>14009 00001</u>	-	1 inch	14 1/2 x 11 1/2 inch
● ◐	14009 00037	With clamps for portable	0 1/2 inch	16 1/2 x 10 inch

\* For the springs to work correctly, the portable must weigh at least 6.5 lbs.



### » Manual seal lock

Type	Article Number	Description
● ◐	<u>19010 00034</u>	Lock
● ◐	<u>19010 00041</u>	Seals (100/pack)



### » Stainless steel serum holder

Type	Article Number	Description
● ◐	<u>14008 00004</u>	With 2 hooks
● ◐	14008 00006	With 4 hooks



### » Connecting unit for 3 glove boxes

Type	Article Number	Int. Dimensions	Ext. Dimensions
●	<u>19010 00039</u>	3 1/2 x 10 x 16 1/2 inch	10 x 3 1/2 x 16 1/2 inch
◐	19022 00008	3 1/2 x 10 x 16 1/2 inch	10 x 3 1/2 x 16 1/2 inch

● For Medicart Drawers & Medicart Roller Shutter

◐ For Medicart Drawers Small

Standard article (non-standard articles have a longer delivery time)

## » Medicart – Accessories



### » Worktop for mouse and scanner

Type	Article Number
------	----------------

● ○	<u>19022 00011</u>
-----	--------------------

Other types of scanner holders possible on request.



### » Retractable worktop replacing the top drawer (1P)

Type	Article Number	Description
●	19034 00084	For Medicart Drawers
○	19035 00040	For Medicart Drawers Small
●	19034 00083	For Medicart Drawers with milled worktop
○	19035 00039	For Medicart Drawers Small with milled worktop



### » Wally® waste bin with knee lever

Type	Article Number	Capacity	Ext. Dimensions
●	19010 00023	8 l	9 x 8 1/4 x 14 3/4 inch
○	19022 00006	8 l	9 x 8 1/4 x 14 3/4 inch



### » CPR board (maximum weight 187 lbs)

Type	Article Number	Ext. Dimensions
●	19010 00031	21 1/4 x 17 3/4 x 0 1/2 inch



### » Oxygen bottle holder

Type	Article Number	Diameter
● ○	19010 00045	Universal dimension

- For Medicart Drawers & Medicart Roller Shutter
- For Medicart Drawers Small

Standard article (non-standard articles have a longer delivery time)

## » Medicart – Accessories



### » Multiple socket with 4 sockets - type E

Type	Article Number
------	----------------

● ●	19010 00036
-----	-------------



### » Defibrillator holder

Type	Article Number	Ext. Dimensions
------	----------------	-----------------

●	19010 00033	14 1/2 x 16 inch
---	-------------	------------------



### » Hook

Type	Article Number
------	----------------

● ●	19010 00040
-----	-------------



### » Catheter tube for the side of Medicart

Type	Article Number	Diameter	Max. height
------	----------------	----------	-------------

● ●	19010 00052	4 inch	31 1/2 inch
-----	-------------	--------	-------------



### » Catheter tubes (3x) for the side of Medicart

Type	Article Number	Diameter	Height
------	----------------	----------	--------

●	19010 00065	4 inch	Variable - standard 19 5/8 inch
---	-------------	--------	---------------------------------

● For Medicart Drawers & Medicart Roller Shutter

● For Medicart Drawers Small

## » Medicart – Accessories



### » Holder for soap dispenser

Type	Article Number
------	----------------

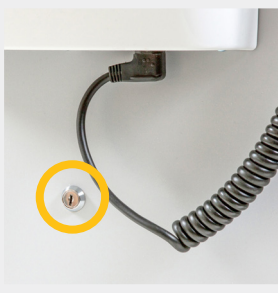
● ○	Upon request
-----	--------------



### » Hook for spiral cord

Type	Article Number
------	----------------

● ○	<u>19020 00282</u>
-----	--------------------



### » Emergency opening with key (only Medicart Drawers)

Type	Article Number	Description
------	----------------	-------------

● ○	19034 00071	Lock with key
-----	-------------	---------------



### » Optional wheels

Type	Article Number	Description
------	----------------	-------------

● ○	99004 00038	Double wheel Linea, dia 5 inch - directional fixation
-----	-------------	---

● ○	99004 00039	Double wheel Linea, dia 5 inch - brake
-----	-------------	--



### » FIFO Pickbox for Stala structure

Type	Article Number	Description	Ext. Dimensions
------	----------------	-------------	-----------------

●	15010 00008	3 trays	24 x 9 x 10 inch
---	-------------	---------	------------------

●	15010 00009	5 trays	24 x 7 x 6 1/2 inch
---	-------------	---------	---------------------

● For Medicart Drawers & Medicart Roller Shutter

○ For Medicart Drawers Small

Standard article (non-standard articles have a longer delivery time)



## » Medicart – Accessories

» Label holder			
Type	Article Number	Description	Ext. Dimensions
● ○	15008 00041	for Medicart Drawers Standard and Small for labels 3 1/4 x 1 3/4 inch	3 3/4 x 2 inch

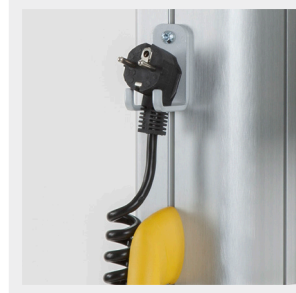


» Retractable worktop Medicart Drawers*		
Type	Article Number	Description
○	Upon request	Small - right
○	Upon request	Small - left
●	Upon request	Standard - right
●	Upon request	Standard - left



\* Not compatible with lock case for USB controlled access; no loss of the number of usable positions.

» Coiled cord	
Article Number	
Pending	



» Charger for integrated badge control	
Article Number	Description
97003 00210	Belintra LiFePO4 charger for integrated badge control



» Holder for tablet / iPad		
Article Number	Description	Ext. Dimensions
14009 00082	Device: max. weight 55 lbs - diagonal 11 27/64-13 35/64 inch	24 61/64 x 18 7/64 x 5 5/16 inch



- For Medicart Drawers & Medicart Roller Shutter
- For Medicart Drawers Small

For filling in with modules, baskets and dividers:  
see chapter "Modular Transport & Storage".